



FAB Learning

Forming a new beginning through bespoke interventions.

Child Protection Policy

Produced: 18th September
2024
To be reviewed annually
Review Date: September 2025

Policy Statement and Principles

FAB Learning Interventions is an alternative provision provider working across the counties of Nottinghamshire and Derbyshire. Our tutors work in a variety of settings and with learners who are not able to access mainstream settings. We believe in keeping learners at the heart of everything we do. Supporting young people through life's challenges and ensuring trusting relationships are formed with families and carers.

We provide our learners with bespoke packages of education and celebrate all of their achievements. Our aim is to encourage them to achieve both their academic and personal potential while ensuring learner safety. Staff working at FAB Learning are expected to act in the best interests of learners at all times and abide by Child Protection

The aim of the policy is to safeguard and promote learners' welfare, safety and health by fostering an honest, open, caring and supportive climate, within the context of Child Protection legislation and our role as an organisation in working with vulnerable learners with a variety of backgrounds. The welfare of learners accessing our provision is of paramount importance, and we understand the requirement for safeguarding and child protection concerns to be addressed in a timely and robust manner. It is the intention of the procedures within our policy to ensure that the appropriate action is taken immediately where it is believed a learner may be at risk of significant harm or it is alleged that a learner is suspected of being abused. The prime concern at all times must be the interests and safety of the learner(s). This policy should be read alongside the following FAB Learning Policies: Safeguarding Policy, Attendance Policy, Behaviour Policy, Complaints Policy, Drugs Policy, E-Safety Policy, Grievance Policy, Prevent Policy, Lone Working Policy, Recruitment Policy, SEND Policy, Supervision of Learners Policy, Whistleblowing Policy and Use of Force Policy.

The person responsible for child protection files, and safeguarding of learners accessing FAB Learning is the Senior Designated Safeguarding Lead. This Child Protection Policy will be reviewed by the Senior Designated Safeguarding Lead Chloe Argent-Duncan on a regular basis to ensure it remains current and incorporates all revisions made to local or national safeguarding guidance. This policy will as a minimum be fully reviewed as a minimum once a year during the autumn term provided to the Directors of FAB Learning for approval and sign off at the first autumn term meeting.

Date of last review: September 2024

Date of next review: September 2025



FAB Learning

Forming a new beginning through bespoke interventions.

Role	Name	Contact Details
Senior Designated Safeguarding Lead	Chloe Argent-Duncan	07519912237
Designated Safeguarding Lead	Claire Bishop	07359748271
Senior Leader(s) available for contact in the absence of the DSLs	Michele Fowler	07519912238
LA Safeguarding Children in Education Officer	Cheryl Stollery	0115 8041047
LA Child Protection Contact/LADO	Eva Callaghan or covering LADO.	0115 8041272
MASH (Multi-agency Safeguarding Hub)		0300 500 80 90
MASH Consultation Line	Office hours	0115 977 4247
Emergency Duty Team (Children's Social care)	Outside of office hours	0300 456 4546
Police (to report a crime and immediate risk of harm or abuse to child)	101	In an emergency 999 (only)
NSPCC help/whistleblowing line	line is available 8.00am to 8.00pm Monday to Friday	0800 028 0285- email: help@nspcc.org.uk



FAB Learning

Forming a new beginning through bespoke interventions.

FAB Learning Interventions

Our policy applies to all staff and volunteers working at FAB Learning and takes into account statutory guidance provided by the Department for Education and local guidance issued by the Nottinghamshire Safeguarding Children Partnership.

We will ensure that all parents/carers are made aware of our responsibilities regarding child protection procedures and how we will safeguard and promote the welfare of their children through the publication of this Child Protection policy, and the duties and responsibilities, as set out within the Education Act 2002 sec175 and 157, DfE Statutory Guidance Keeping Children Safe in Education 2023 and HM Working Together to Safeguard Children 2023 (published 15th December 2023, updated February 2024), which are incorporated into this policy.

Child Protection and Safeguarding Statement

We recognise our moral and statutory responsibility to safeguard and promote the welfare of all pupils. We will endeavour to provide a safe and welcoming environment where children are respected and valued. We will be alert to the signs of abuse and neglect and follow our procedures to ensure that children receive effective support, protection, and justice. The procedures contained in this policy apply to all staff, supply staff, volunteers, and contractors affiliated FAB Learning and are consistent with those of Nottinghamshire Safeguarding Children Partnership (NSCP).

Maintaining a child centered and coordinated approach to safeguarding:

Everyone who works at FAB Learning understands they are an important part of the wider safeguarding system for children and accepts safeguarding and promoting the welfare of children is everyone's responsibility and everyone who comes into contact with children and their families has a role to play. To fulfill this responsibility effectively, all our staff, including supply staff and volunteers will ensure their approach is child-centered and will be supported to consider, at all times, what is in the best interests of the child.

We recognise no single practitioner can have a full picture of a child's needs and circumstances. If children and families are to receive the right help at the right time, everyone who comes into contact with them has a role to play in identifying concerns, sharing information, and taking prompt action.

Safeguarding children is defined as: The actions we take to promote the welfare of children and protect them from harm are everyone's responsibility. Everyone who comes into contact with children and families has a role to play.

Safeguarding and promoting the welfare of children is defined as:

- Protecting children from maltreatment.
- Preventing the impairment of children's mental and physical health or development.



FAB Learning

Forming a new beginning through bespoke interventions.

- Ensuring that children grow up in circumstances consistent with the provision of safe and effective care.
- Taking action to enable all children to have the best outcomes.

Safeguarding and promoting the welfare of children is defined in line with pertinent legislation including KCSIE 2024. For the purposes of this document, safeguarding is defined as:

- protecting children from maltreatment;
- preventing impairment of children's mental and physical health or development;
- ensuring that children grow up in circumstances consistent with the provision of safe and effective care; and
- taking action to enable all children to have the best outcomes.

*Children includes everyone under the age of 18.

NB Definition: Children includes everyone under the age of 18.

Whole FAB Learning approach to safeguarding:

- We understand the importance every member of our staff has through their contact with children in and outside of our school environment and the particular importance of the roles and relationships they have which places them in a position to identify concerns early, provide help for children and promote children's welfare and prevent concerns from escalating.
- We have a responsibility to provide a safe environment in which children can learn, we will regularly review our 'safeguarding arrangements', to ensure these remain effective and all children and staff are safe.
- We will make every effort to identify children who may benefit from early help and put in place support as soon as a problem emerges at any point in a child's life.
- **Any staff member** who has **any** concerns about a child's welfare should follow the processes set out in this child protection policy and raise concerns with the designated safeguarding lead or deputy without delay.
- All our staff should expect to support social workers and other agencies following any referral, especially if they were involved, in being alert to, or receiving a disclosure of risk, harm or abuse or harassment from a child.
- Our senior designated safeguarding lead will provide support to staff to carry out their safeguarding duties and who will liaise closely with other services such as children's social care, police, health and NCC early help service, where required, as the designated safeguarding lead (and any deputies) are most likely to have a complete safeguarding picture and be the most appropriate person to advise on the response to safeguarding concerns.

Safeguarding is not just about protecting children from deliberate harm. It also relates to the broader aspects of care and education including:

FAB Learning

Forming a new beginning through bespoke interventions.

- Pupils' health and safety and emotional well-being, and their mental and physical health or development.
- Meeting the needs of children with special educational needs and/or disabilities.
- Ensuring reasonable adjustments are provided as informed by the Equality Act for disabled children and young people with SEN.
- Where a child receives elective home education and has an EHCP, we will ensure the LA is provided with details of the plan and letter of decision from the child's parents and carers.
- The use of 'reasonable force' and inclusive behaviour management strategies.
- Meeting the needs of children with medical conditions.
- Providing first aid.
- Educational visits and off- site education.
- Intimate care and emotional wellbeing.
- On-line safety and associated issues including filtering and monitoring in accordance with DfE monitoring standards.
- Appropriate arrangements to ensure school security, considering the local context.
- Keeping children safe from risks, harm, exploitation and sexual violence and sexual harassment between children: KCSiE 2024 Annex A.

Safeguarding can involve a range of potential issues such as:

- Neglect, physical abuse, sexual abuse, and emotional abuse.
- Contextualised also known as extra-familial abuse.
- Bullying, including online bullying (by text message, on social networking sites, and prejudice-based bullying and being aware of the ease of access to mobile phone networks.
- The approach to online safety, including appropriate filtering and monitoring on FAB Learning devices and networks, including home use.
- 'Deliberately missing education and children who have unexplained or persistent absence from education' or may be going 'missing from care or home' and the risks this poses on repeat occasions and for prolonged periods.
- Domestic Abuse including teenage relationship abuse.
- Racist, disability- based, homophobic, bi-phobic, or transphobic abuse.
- Gender based violence/violence against women and girls.
- Risk of extremist behaviour and/or radicalisation and susceptible to being at risk of being drawn into terrorism.
- Child sexual exploitation, human trafficking, modern slavery, sexual or criminal exploitation.
- A young carer.
- Has a mental health need and has an effect on school attendance and progress.
- Has special educational needs (whether or not they have a statutory Education Health and Care Plan (EHCP).
- Privately fostered.
- Has returned home to their family from care.
- Has a family member in prison or is affected by parental offending.
- Child-on-Child Abuse (to include children abusing other children, other varying form of bullying including online and sexually harmful behaviour, sexual violence, and sexual harassment (further defined in KCSiE 2024 Part Five).



FAB Learning

Forming a new beginning through bespoke interventions.

- Harm outside the home extra familial harm.
- The impact of new technologies, including 'sexting' and accessing pornography.
- Issues which may be specific to a local area or population, is showing signs of being drawn into anti-social or criminal behaviour, including gang activity or involvement and associations with organised crime groups or county lines.
- In possession of a knife and or involved in knife crime, youth violence, criminal child exploitation (CCE).
- Is in family circumstances which present challenges for the child, such as drug and alcohol misuse, adult mental health issues and domestic abuse/harm.
- Is at risk of or from serious violence and violent crime.
- Persistent absence from education, including persistent absence for part of the school day.
- At risk of suspension or permanent exclusion
- Issues affecting children including domestic abuse and violence, female genital mutilation, and honour-based abuse.
- Being subject to any conduct where the purpose is to cause a child to marry before their eighteenth birthday, even if violence, threats, or another form of coercion are not used. As with the existing forced marriage law, this applies to non-binding, unofficial 'marriages' as well as legal marriages (Law change on Forced Marriage, February 2023).
- 'Upskirting'- The Voyeurism (Offences) Act, which is commonly known as Up-skirting Act, came into force on 12 April 2019. Upskirting is a criminal offence and reportable by all teachers (KCSiE Annex A).

All our staff and volunteers are aware of the indicators of abuse and neglect and know what to look for is vital for the early identification so that support can be put in place. Our staff and volunteers are also aware of the specific safeguarding issues that indicate or inform of concerns or incidents linked to child criminal exploitation and child sexual exploitation and know to report concerns directly to the designated safeguarding or a member of the senior leadership team should the designated safeguarding lead not be available for children who may be in need of help or protection.

Our staff recognise that children may not feel ready or know how to tell someone that they are being abused, exploited, or neglected, and/or they may not recognise their experiences as harmful. Children may also feel embarrassed, humiliated, or could be being threatened not to tell, so not feel able to share what is happening to them. Alternatively, we recognise children may not want to make a disclosure or talk about what is happening due to their vulnerability, disability and/or sexual orientation or language barriers. This should not prevent staff from having a professional curiosity and speaking to the DSL if they have concerns about a child and agree a way forward to support the child and determine how best to build trusted relationships with children and young people which facilitate good opportunities for communication.

All staff should always speak to the designated safeguarding lead, or deputy at the earliest opportunity.

All our staff are aware that abuse, neglect, and safeguarding issues are rarely standalone events and cannot be covered by one definition or one label alone. In most cases, multiple



FAB Learning

Forming a new beginning through bespoke interventions.

issues will overlap with one another, therefore all staff should always be vigilant and always raise any concerns with the designated safeguarding lead (or deputy).

All staff should be aware that safeguarding incidents and/or behaviours can be associated with factors outside FAB Learning and which can occur between children outside of our school environment.

All staff have received information and training regarding the risks that can take place outside their families. This is known as extra-familial harm and these can take a variety of different forms and children can be vulnerable to multiple harms including (but not limited to) sexual exploitation, criminal exploitation, sexual abuse, serious youth violence and county lines.

Our staff are aware that technology offers many opportunities but is a significant component in many safeguarding and wellbeing issues. Children are at risk of abuse online as well as face to face. Children can also abuse their peers online, this can take the form of abusive, harassing, and misogynistic messages, the non-consensual sharing of indecent images, especially around chat groups, and the sharing of abusive images and pornography, to those who do not want to receive such content.

All our staff have 'an understanding of the expectations, applicable to their roles and responsibilities in relation to filtering and monitoring' of ICT systems and regular monitoring of school's equipment and networks.

We have an online safety policy which informs of the filtering and monitoring arrangements on ICT devices and networks to keep children safe and is reflected in this Child Protection Policy including awareness of the vulnerabilities when accessing to mobile phone networks. (See KCSiE 2024 Paragraphs 12,102,123 and 133 to 146).

Our Snr DSL and the DSL team has the lead responsibility in this area, which is overseen and regularly reviewed by the company Directors, along with considering the number of and age range of their children, those who are potentially at greater risk of harm, and how often they access the IT system along with the proportionality of costs versus safeguarding risks.'

Directors will ensure they maintain oversight of *the Online Safety Policy contained within our main child protection policy*, and the arrangements put in place to ensure appropriate filtering and monitoring on school devices and school network. The appropriateness of any filtering and monitoring systems will in part be informed by the risk assessment required by the Prevent Duty as required by KCSiE 2024 paragraphs 145 to 146.

This will include:

- identify and assign roles and responsibilities to manage filtering and monitoring systems.
- review filtering and monitoring provision at least annually.
- block harmful and inappropriate content without unreasonably impacting teaching and learning.
- have effective monitoring strategies in place that meet the school/ colleges safeguarding need.



FAB Learning

Forming a new beginning through bespoke interventions.

- review and discuss the standards with the leadership team, IT staff and service providers to ensure the school/college meets the standard published by the [Department for Education filtering and monitoring standards](#).

For further information, please access our E-Safety Policy through the FAB Learning Website, or by emailing chloeargent@fablearning.uk

Senior leaders at FAB Learning will ensure a review is maintained to ensure the standards and discuss with IT staff and service providers these standards and whether more needs to be done to support our alternative provision in meeting and maintaining this standard and communicating these to staff, pupils, parents, carers and visitors to community venues where we carry out our work, who provide teaching to children as part of the learning and educational opportunities we provide.

Our Senior DSL and the DSL team will always act in the 'best interest of the child' and remain mindful of the importance with parents and carers about safeguarding concerns held for children and in particular children's access to online sites when away from FAB Learning We will support understanding of harmful online challenges and hoaxes and share information with parents and carers and where they can get help and support.

We make clear in all our policies that all forms of abuse or harassment will be reported in accordance with national safeguarding guidance, and we will take a 'zero tolerance' approach to harassment and abuse as informed by DfE KCSiE (statutory guidance).

Should an incident or disclosure be made by a child, our staff will always reassure the child (victim) that they are being taken seriously and that they will be supported and kept safe, but we recognise that not every victim will view themselves as such. We will also be mindful of the use of other terminology such as '**alleged perpetrator(s)**' or '**perpetrator(s)**' as in some cases the abusive behaviour will have been harmful to the perpetrator as well.

We will do our best to ensure children understand the law on child-on-child abuse is there to protect them rather than criminalise them. In doing this we will discuss with relevant statutory safeguarding agencies to ensure all concerns or incidents are addressed fully, and where required different types of assessment and services are put in place where required and in accordance with the Nottinghamshire County Council and the Nottinghamshire Safeguarding Children Partnership Pathway to Provision (threshold guidance for referral and access to services).

Identifying Concerns

All members of staff, volunteers and governors will know how to identify pupils who may be being harmed and then how to respond to a pupil who discloses abuse, or where others raise concerns about them. Our staff will be familiar with procedures to be followed.

Staff understand that abuse, neglect, and safeguarding issues are rarely standalone events that can be covered by one definition, and that in most cases multiple issues will overlap with each

other. Staff who regularly come into contact with children are aware of the DfE guidance [What to do if you're worried a child is being abused](#)

All our staff and volunteers have received safeguarding training to ensure they are able to recognise the indicators of child abuse, harm, or neglect, and will always speak to the designated safeguarding lead or deputy should they become alert or be informed (directly or indirectly) of an incident or concern.

Indicators of Abuse and Neglect

Abuse: a form of maltreatment of a child. Somebody may abuse or neglect a child by inflicting harm or by failing to act to prevent harm. Harm can include ill treatment that is not physical as well as the impact of witnessing ill treatment of others. This can be particularly relevant, for example, in relation to the impact on children of all forms of domestic abuse, including where they see, hear, or experience its effects. Children may be abused in a family or in an institutional or community setting by those known to them or, more rarely, by others. Abuse can take place online, or technology may be used to facilitate offline abuse. Children may be abused by an adult or adults or by another child or children.

The four categories of child abuse are as follows:

1. **Physical Abuse**
2. **Emotional Abuse**
3. **Sexual Abuse**
4. **Neglect**

Indicators of abuse and neglect

Abuse: a form of maltreatment of a child. Somebody may abuse or neglect a child by inflicting harm or by failing to act to prevent harm. Children may be abused in a family or in an institutional or community setting by those known to them or, more rarely, by others. Abuse can take place wholly online, or technology may be used to facilitate offline abuse. Children may be abused by an adult or adults or by another child or children.

Physical abuse: a form of abuse which may involve hitting, shaking, throwing, poisoning, burning, or scalding, drowning, suffocating, or otherwise causing physical harm to a child. Physical harm may also be caused when a parent or carer fabricates the symptoms of, or deliberately induces, illness in a child.

Emotional abuse: the persistent emotional maltreatment of a child such as to cause severe and adverse effects on the child's emotional development. It may involve conveying to a child they are worthless or unloved, inadequate, or valued only in so far as they meet the needs of another person. It may include not giving the child opportunities to express their views, deliberately silencing them or 'making fun' of what they say or how they communicate. It may feature age or developmentally inappropriate expectation being imposed on children. These may include interactions that are beyond a child's developmental capability as well as over protection and limitation of exploration and learning or preventing the child from participating in normal social interaction. It may involve seeing or hearing the ill-treatment of another. It may



FAB Learning

Forming a new beginning through bespoke interventions.

involve serious bullying (including cyberbullying), causing children to feel frightened or in danger, or the exploitation or corruption of children. Some level of emotional abuse is involved in all types of maltreatment of a child, although it may occur alone.

Sexual abuse: involves forcing or enticing a child or young person to take part in sexual activities, not necessarily involving violence, whether or not the child is aware of what is happening. The activities may involve physical contact, including assault by penetration (for example rape or oral sex) or non-penetrative acts such as masturbations, kissing, rubbing, and touching outside of clothing. They may also include non-contact activities, such as involving children to look at, or in the production of, sexual images, watching sexual activities, encouraging children to behave in sexually inappropriate ways, or grooming a child in preparation for abuse. Sexual abuse is not solely perpetrated by adult males. Women can also commit acts of sexual abuse, as can other children. The sexual abuse of children by other children is a specific safeguarding issue (also known as child-on-child abuse) in education and **all** staff should be aware of it and of their school or colleges policy and procedures for dealing with it.

Neglect: the persistent failure to meet a child's basic physical and/or psychological needs, likely to result in the serious impairment of the child's health or development. Neglect may occur during pregnancy, for example, as a result of maternal substance abuse. Once a child is born, neglect may involve a parent or carer failing to; provide adequate food, clothing, and shelter (including exclusion from home or abandonment); protect a child from physical and emotional harm or danger; ensure adequate supervision (the use of inadequate caregivers); or ensure access to appropriate medical care or treatment. It may also include neglect of, or unresponsiveness to, a child's basic emotional needs.

Safeguarding issues: All staff should have an awareness of safeguarding issues that can put children at risk of harm. Behaviours linked to issues such as drug taking and or alcohol misuse, deliberately missing education and consensual and non-consensual sharing of nudes and semi-nude images and/or videos can be signs that children are at risk.

FAB Learning acknowledges the vulnerability of the learners and young people we work with, and the vigilance required from staff in order to notice indicators of emerging threats or harm to learners. In order to ensure staff are confident in identifying and reporting safeguarding concerns, they receive annual safeguarding training refreshers, ongoing safeguarding updates from the DSL, and mandatory safeguarding training throughout the academic year.

We are mindful that many learners have access to a variety of media platforms through digital devices, and staff need to be extremely vigilant of the content they may be accessing, especially in an alternative provision setting. All parents/carers are informed of the e-safety procedures of FAB Learning during initial home visits, and signposted to appropriate resources and guidance related to exploitations, grooming and radicalisation through a leaflet during their initial meetings with Learning Managers.

We have put in place an open and positive culture for safeguarding which is embedded into the way everyone works together, is effective in sharing information in timely manner and meets local thresholds with safeguarding partners, to ensure what is 'best to keep the child/children



FAB Learning

Forming a new beginning through bespoke interventions.

safe. It includes an environment where everyone feels safe, well cared for, and knows they will be listened to and provided with help and support.

Our ethos demonstrates that the effective safeguarding of children can only be achieved by putting children at the center of a system, where we listen to children and hear what they say. Every individual within FAB Learning will play their part, including working with professionals from other agencies, particularly social workers, to meet the needs of our most vulnerable children and keep them safe. We will take opportunities to teach children about important safeguarding issues in a way that is age appropriate.

All learners who access our provision receive a learner induction, which discusses their interests, personal learning styles and preferences for communication. We aim to foster a positive relationship with the learners and families we work with, by timetabling consistent staff members that form trusting relationships with learners. Learners are given specific information during their induction about ways to report any concerns as well as a variety of child-friendly resources. Our ethos reflects putting learners at the center of all decisions, and it is therefore our responsibility to ensure that their concerns are always addressed through discussion in sessions, or senior members of staff..

Our alternative provision is led by senior members of staff and Learning Managers whose aims are to provide a safe environment and vigilant culture where children and young people can learn and be safeguarded. If there are safeguarding concerns, we will respond with appropriate action in a timely manner for those children who may need help or who may be suffering, or likely to suffer, significant harm.

Where staff members have concerns about a child (as opposed to a child being in immediate danger) they will decide what action to take in conjunction with the Snr Designated Safeguarding Lead. Although we advocate that any staff member can make a referral to children's social care or MASH, especially where a child is identified as being in immediate danger, they should however ensure that the Designated Safeguarding Lead (DSL), or a member of the senior leadership team is informed as soon as possible.

We also ensure that all our staff are clear that whilst they should discuss and agree with the DSL any actions to be taken, they are able to escalate their concerns and contact MASH, MASH Consultation Line or social care to seek support for the child if despite the discussion with the DSL their concerns remain. Staff are also informed of the whistle blowing procedures and the contact details for the Local Authority LADO and NSPCC helpline.

Information sharing is vital in identifying and tackling all forms of abuse and neglect. As part of meeting a child's needs, it is important for all stakeholders to recognise the importance of information sharing between practitioners and local agencies. This should include ensuring arrangements are in place that set out clearly the processes and principles for sharing information within FAB Learning, other organisations, agencies and practitioners as required. Learning Managers/staff should be proactive in sharing information as early as possible to help identify, assess and respond to risks or concerns about the safety and welfare of children, whether this is when problems are first emerging, or where a child is already known to the local authority children's social care.

FAB Learning is aware that among other obligations, the Data Protection Act 2018 and the GDPR



FAB Learning

Forming a new beginning through bespoke interventions.

place duties on the company and our staff to process personal information fairly and lawfully and to keep the information they hold safe and secure.

Actions where there are concerns about a child – key elements:

- **Recognition**
- **Response**
- **Inform Learning Manager and DSL in line with company policy**

Where a school places a pupil with an alternative provision provider, the school continues to be responsible for the safeguarding of that pupil and should be satisfied that the provider can meet the needs of the pupil.

Children who attend alternative education often have complex needs, it is important governing bodies/trusts and designated safeguarding leads ensure children are fully supported at all times, and the alternative setting is aware of any additional risks of harm that pupils may be vulnerable to. Information sharing for pupils who receive education provision outside of a mainstream setting is vital to support the child and ensure the learning environment where they are placed has all necessary information for the child before they access the provision. The working together principles are key to keep the child safe and understanding the vulnerabilities needing to be supported. We will ensure up to date contact details for the professionals working with the child and family are provided to the designated safeguarding leads as required.

FAB Learning

The Senior Designated Safeguarding Lead (DSL) who is familiar with national and local guidance, will share concerns, where appropriate, with the relevant agencies.

Supporting Learners

The SDSL at FAB Learning will liaise with appropriate agencies including, but not limited to social care, police YJS etc by taking part in direct correspondence and taking part in multi-agency meetings and offering updates as and when required. The DSL will maintain a list of contacts provided and services involved with each learner, to inform them of any updates when required.

Staff at FAB are trained to support learners by employing the following strategies:

- The staff recognise that a child or young person who is abused or witness's violence may find it difficult to develop and maintain a sense of self-worth. We recognise that in these circumstances pupils might feel helpless and humiliated, and that they might feel self-blame.
- We recognise that a child's tutor might provide the only stability in the lives of pupils who have been abused or who are at risk of harm.
- We accept that research shows that the behaviour of a pupil in these circumstances might range from that which is perceived to be normal to aggressive or withdrawn.
- Supporting children in care is a key priority for all staff. We recognise that the needs of this group of children can only be effectively met when all agencies work together.



FAB Learning

Forming a new beginning through bespoke interventions.

All staff receive a safeguarding induction prior to commencing employment as well as targeted safeguarding training, as well as weekly safeguarding updates when required. Staff are scheduled for termly drop-ins where they are asked questions about safeguarding reporting measures at FAB, and the appropriate actions to take if a concern is raised. FAB Learning maintains a single central record and carries out all recruitment in line with Safer Recruitment Practices Outlined in *Keeping Children Safe in Education 2024*.

Allegations against members of staff

Should a member of staff find themselves in a situation whereby an allegation of abuse or other has been made against them, they should contact the Director and a member of the DSL team. Do not discuss the allegation with other staff or approach the child. The Director and DSL will consult the document: 'Staff facing an allegation of abuse. Guidelines on practice and procedure' and will contact the Local Authority Safeguarding Officer or other appropriate agency officer. Should an allegation be made against management the LADO will be contacted by the DSL and appropriate advice sought. Similarly, any allegations between students will be referred to the DSL. Staff should not feel that awareness of these potentially serious issues detracts from developing positive relationships with young people or spoils the enjoyment that is derived from the challenge and pleasure of working with them. Both incidents of abuse and allegations against staff are rare. Staff should feel confident in the knowledge that they know the correct procedure and how the FAB Learning will support them if they are involved in a Safeguarding issue.

The Senior DSL and deputies (DSL team) maintains a key role in raising awareness amongst staff about the needs of children who have or who have had a social worker and the barriers that those children might experience in respect of attendance, engagement and achievement at schools or college.

The DSL can inform Directors and Learning Managers of children in their cohort who have or who have had a social worker and appropriate information is shared with teachers and staff on individual children's circumstances. Staff must not liaise/communicate with any young person being tutored by FAB Learning via any form of social networking site. This message is conveyed through regular emails and during the 'Safeguarding' update at the start of every staff meeting.

Additionally, the safe use of 'multimedia' in its widest sense, particularly internet use, must be promoted by staff and vigilantly monitored. An E-Safety Acceptable Use Statement will be signed by learners during the initial meeting with Learning Managers, parents will also be made aware of acceptable use guidelines.

The Senior Designated Safeguarding Lead maintains data for children who have looked after status and for children who have been involved in the care system.

Our Child Protection Policy



FAB Learning

Forming a new beginning through bespoke interventions.

There are eight main elements to our policy:

- Providing a safe environment in which children can learn and develop.
- Ensuring we practice safe recruitment in checking the suitability of staff and volunteers to work with children.
- Developing and then implementing procedures for identifying and reporting cases, or suspected cases of abuse in and outside of school.
- Supporting pupils who have social care involvement in accordance with his/her child in need plan, child protection plan or are subject to Local Authority Care.
- Raising awareness of safeguarding children, child protection processes and equipping children with the skills needed to keep them safe in and outside of our learning environment.
- Recognising early help is the best way to support children and by providing support as soon as a problem emerges at any point in a child's life.
- Working in partnership with agencies and safeguarding partners in the 'best interest of the child.'
- Ensuring we have appropriate policies and procedures to deal with child-on-child sexual violence and sexual harassment and maintain the required filtering and monitoring arrangements for online safety and harms.

We recognise that because of the day-to-day contact our staff have with children they and we are well placed to observe the outward signs of abuse and report concerns in a timely manner to seek help or interventions and support the child/ children.

FAB Learning will therefore:

- Establish and maintain an environment where children feel secure, are encouraged to talk, and are listened to and heard.
- Ensure children know that there are trusted adults in the school who they can approach if they are worried.
- Ensure that every effort is made to establish effective working relationships with parents, carers, and colleagues from other agencies.
- Include opportunities in the RSHE curriculum for children to develop the skills they need to recognise and stay safe from abuse by:
- Recognise and managing risks including online safety, radicalisation and extremism, sexual exploitation, child on child sexual violence and sexual harassment, the sharing of nude and semi -nude images which has replaced what was termed as sexting.
- Support the development of healthy relationships and awareness of domestic violence and abuse, recognising that Domestic Abuse can encompass a wide range of behaviours and may involve a single incident or a pattern of incidents. That abuse can be, but is not limited to, psychological, physical, sexual, financial, or emotional harm and children can be victims of domestic abuse. They may see, hear, or experience the effects of abuse at home and/or suffer domestic abuse in their own intimate relationships (teenage relationship abuse). All of which can have a detrimental and long-term impact on their health, well-being, development, and ability to learn.
- Recognising how pressure from others and safeguarding vulnerabilities can affect their behaviour.



FAB Learning

Forming a new beginning through bespoke interventions.

- Recognising the link between mental health, school attendance and children 'absent from education' and the impact on learning, progress, and educational attainment.
- We will act swiftly to address any concerns related to serious violence, gang and knife crime or child on child sexual violence or sexual harassment incidents.
- Ensure our behaviour policy includes measures to prevent bullying, including cyberbullying, harmful online challenges, hoaxes, prejudice-based and discriminatory bullying and use of social media platforms and networks
- Maintain an on-line safety policy which address statutory filtering and monitoring standards, which take into account remote learning, and use of mobile and smart technology and is reviewed regularly to take into account any new threats
- Work in partnership with safeguarding agencies to address any 'harm outside the home' also known as 'extra familial harm' and create a culture where children and young people can share concerns and seek support in a safe place and where children and young people can form safe and trusted relationships. Where children and young people can feel assured, they will be listened to, heard, and offered support to enable them share sensitive information and strengthen their resilience.
- We acknowledge the importance of working together with parents, carers, and external services to form strong and trusted partnerships, which can advocate trauma informed and trauma aware responses,
- We will help create and maintain safe places and spaces within the community, so children and young people know how to access a place of safety outside of the school/college environment if needed.
- We will take all reasonable measures to ensure any risk of harm to children's welfare is minimised inside and outside of our alternative education provisions environment.
- Take all appropriate actions to address concerns about the welfare of a child, working to local policies and procedures in full working partnership with agencies.
- Ensure robust child protection arrangements are in place and embedded in the daily life and practice of the school.
- Promote pupil health and safety.
- Promote safe practice, and challenge unsafe practice.
- Ensure that procedures are in place to deal with allegations of abuse against teachers and other staff including volunteers, supply staff and contractors. KCSiE Part Four has two sections, the second section addresses low-level concerns.
- Provide first aid and meet the health needs of children with medical conditions.
- Ensure school site security.
- Address drugs and substance misuse issues.
- Support and plan for young people in custody and their resettlement back into the community.
- Work with all agencies regarding missing children, anti-social behaviour/gang activity and violence in the community/knife crime and children at risk of sexual exploitation.
- Everyone having a duty to safeguard children inside/outside the school environment including school trips, extended school activities, vocational placements, and alternative education packages.

Immediate response to the pupil

It is vital that our actions do not harm the learner further or prejudice further enquiries, for example:

FAB Learning

Forming a new beginning through bespoke interventions.

- listen to the learner, if you are shocked by what is being said, try not to show it
- it is okay to observe bruises but not to ask a pupil to remove their clothing to observe them
- if a disclosure is made,
- accept what the learner says
- stay calm, the pace should be dictated by the pupil without them being pressed for detail by asking leading questions such as “what did s/he do next?” It is your role to listen - not to investigate.
- be careful not to burden the pupil with guilt by asking questions like “why didn’t you tell me before?”
- acknowledges how hard it was for the learner to tell you
- does not criticise the perpetrator, the learner might have a relationship with them
- does not promise confidentiality,
- reassure the pupil that they have done the right thing, explain whom you will have to tell (the designated lead) and why; and, depending on the learner’s age, what the next stage will be. It is important that you avoid making promises that you cannot keep such as “I’ll stay with you all the time” or “it will be all right now”.

All policies relating to Safeguarding will be reviewed annually. These guidelines apply to all young people receiving tuition from FAB Learning staff.

Children may be abused or placed at risk of harm in a family, institutional or community setting. Staff at FAB Learning have a 'duty of care' to ensure that where abusive situations become known, they are dealt with, according to the clear guidance and procedures drawn up by the Local Authority.

- Staff should be alert to signs and symptoms of harm or abuse.
- Staff should know how to respond when they have concerns or when a learner discloses to them and to take appropriate actions.
- Undergo child safeguarding training which is updated regularly in line with advice from the Safeguarding Boards (City and County) (whole staff training every 3 years)

Reporting concerns to the designated leads - Any concern should be discussed, in the first instance, with one of the designated leads, as soon as possible. ***If at any point, there is a risk of immediate serious harm to a child, a referral should be made to Children’s Social Care or police immediately. Anybody can make such a referral.***

Mental Health

All staff should also be aware that mental health problems can, in some cases, be an indicator that a child has suffered or is at risk of suffering abuse, neglect or exploitation.

Only appropriately trained professionals should attempt to make a diagnosis of a mental health problem. Staff however, are well placed to observe children day-to-day and identify those whose behaviour suggests that they may be experiencing a mental health problem or be at risk of developing one.

Where children have suffered abuse and neglect, or other potentially traumatic adverse childhood

FAB Learning

Forming a new beginning through bespoke interventions.

experiences, this can have a lasting impact throughout childhood, adolescence and into adulthood. It is key that staff are aware of how these children's experiences, can impact on their mental health, behaviour and education. If staff have a mental health concern about a child that is also a safeguarding concern, immediate action should be taken, following their child protection policy and speaking to the designated safeguarding lead.

Note: *KCSiE 24 Paragraphs 205 to 209 informs statutory guidance for 'Children who are lesbian, gay, bisexual, or gender questioning is under review, pending the outcome of the gender questioning children guidance consultation, and final gender questioning guidance documents being published.*

Child abduction and community safety incidents – Child abduction is the unauthorised removal or retention of a minor from a parent or anyone with legal responsibility for the child. Child abduction can be committed by parents or other family members; by people known but not related to the victim (such as neighbours, friends, and acquaintances); and by strangers. (KCSiE 2024 Annex B (page 149).

Other community safety incidents in the vicinity of a school can raise concerns amongst children and parents, for example, people loitering nearby or unknown adults engaging children in conversation.

Does your school operate the NCC & NSCP School Safe Alert protocol? If so, how is it communicated to staff, parents, and your community.

As children get older and are granted more independence (for example, as they start walking to school on their own) it is important they are given practical advice on how to keep themselves safe.

We will follow the procedures set out by the Nottinghamshire Safeguarding Children Partnership (NSCP) and take account of guidance issued by the DfE in Keeping Children Safe in Education 2024 to:

- Ensure we have a Senior Designated Safeguarding Lead (SDSL), who is a member of the alternative education provision leadership team, and a Deputy Safeguarding Lead for child protection/safeguarding who has received appropriate training and support for this role.
- The Designated Safeguarding Lead role is written into their job description and clarifies the role and responsibilities including as defined in KCSiE 2024 Annex C.
- Ensure we have a nominated governor responsible for child protection/safeguarding.
- Ensure that we have a Designated Teacher for Looked After Children (LAC).
- Ensure every member of staff (including temporary, supply staff and volunteers) and the governing body knows the name of the Senior Designated Safeguarding Lead, their deputies responsible for child protection, and their role.
- Ensure all staff and volunteers understand their responsibilities in being alert to the signs of abuse and their responsibility for referring any concerns to the Designated Safeguarding Lead, or to children's social care/police if a child is in immediate danger.
- Ensure that there is a whistleblowing policy and culture where staff can raise concerns about unsafe practice, and that these concerns will be taken seriously.



FAB Learning

Forming a new beginning through bespoke interventions.

- Ensure that there is a complaints system in place for children and families.
- Ensure that parents understand the responsibility placed on the school and staff for child protection and safeguarding by setting out its obligations in the school prospectus and on the school's website.
- Notify Children's Social Care if there is an unexplained absence for a child who is subject to a child protection plan and where no contact can be established with the child, or a parent or appropriate adult linked to the child.
- Develop effective links with relevant agencies and cooperate as required with their enquiries regarding child protection matters, including attendance at child protection conferences.
- Keep written records of concerns about children, even where there is no need to refer the matter immediately; documenting and collating information on individual children to support early identification, referral, and actions to safeguard.
- Ensure all records are kept securely; Child protection and confidential safeguarding files are kept separate from the main pupil file on an electronic management and recording system.
- Ensure that we follow robust processes to respond when children are missing from education or missing from home or care.
- Develop and then follow procedures where an allegation is made against a member of staff or volunteer.
- Ensure safe recruitment practices are always followed.
- Apply confidentiality appropriately.
- Apply the NSCP escalation procedures if there are any concerns about the actions or inaction of social care staff or staff from other agencies.

Supporting children

We recognise that children may not feel ready or know how to tell someone that they are being abused, exploited, or neglected, and/or they may not recognise their experiences as harmful. For example, children may feel embarrassed, humiliated, or being threatened. This could be due to their vulnerability, disability and/or sexual orientation or language barriers. We recognise that children who are abused or who witness violence may find it difficult to develop a positive sense of self-worth. They may feel helplessness, humiliation, and some sense of blame. The school may be the only stable, secure, and predictable element in the lives of children at risk. When at school their behaviour may be challenging and defiant or they may be withdrawn. This should not prevent staff from having a professional curiosity and speaking to the DSL if they have concerns about a child. It is also important that staff determine how best to build trusted relationships with children and young people which facilitate communication. We also recognise that there are children who are more vulnerable than others, which include children with special educational needs and or disabilities.

All staff including volunteers are advised to maintain the attitude of **'it could happen here'** where safeguarding is a concern, and when concerned about the welfare of the child should always act in the **best** interests of the child.

FAB Learning will endeavour to support the pupil through:



FAB Learning

Forming a new beginning through bespoke interventions.

- Developing the content of the curriculum to integrate conversations related to keeping safe in the community, healthy living, and the person to report abuse to. Learners also receive an induction and leaflet with contact names, the DSL contact details and pertinent information when they begin provision.
- Maintaining an ethos which promotes a positive, supportive, and secure environment, and which gives pupils a sense of them being valued.
- The school behaviour policy, anti-bullying policy and child-on-child abuse policy which is kept up to date with national and local guidance and which is aimed at supporting vulnerable pupils in our alternative provision
- We will proactively ensure that all children know that some behaviours are unacceptable and will need to be addressed but as members of our alternative provision they are valued and will be supported through the time required to deal with any abuse or harm that has occurred, or outcomes from incidents.
- Liaison with other agencies that support the pupil such as Children's Social Care (in line with the Pathway to Provision Version), Behaviour and Attendance Service and Education Psychology Service, use of Complex Case Resolution Meetings and the Early Help Assessment Form (EHAF).
- Ensuring that, where a pupil leaves and is subject to a child protection plan, child in need plan or where there have been wider safeguarding concerns, their information is transferred to the new school immediately or within **5 working days** and that the child's social worker is informed.
- Ensuring that the vulnerability of children with special educational needs and or disabilities is recognised and fully supported by working closely with learners and families to ensure their voices are heard and needs are taken into account, engaging in multi-agency working and collaboration to maintain learners best interests and outcomes.
- Where a child discloses a concern or informs of an incident that has involved them in an incident involving sexual violence and or sexual harassment the staff member will ensure the child (victim) is taken seriously, kept safe and never be made to feel like they are creating a problem for reporting abuse, sexual violence, or sexual harassment.

Safe Staff and Safe Recruitment

- The leadership team of the alternative provision will ensure that all safer working practices and recruitment procedures are followed in accordance with the guidance set out in KCSiE 2024 Part Three and advised by *NCC HR Services* policy and practice guidance.
- Leaders, staff and members of the *governing body/ trust* will be appropriately trained in safer working practices and access the safer recruitment training advised by *NCC HR Service the Trust*. (*NCC direct schools to the NSPCC Safe Recruitment online course*).
- Statutory pre-employment checks and references from previous employers are an essential part of the recruitment process. We will ensure we adopt the appropriate necessary procedures to conduct the checks required and where any concerns arise, we will seek advice and act in accordance with national guidance.
- Our alternative education provision has in place recruitment, selection, and vetting procedures in accordance with KCSiE 2024 Part Three and maintains a Single Central

FAB Learning

Forming a new beginning through bespoke interventions.

Record (SCR), which is reviewed regularly and updated in accordance with KCSiE 2024 Part Three.

- Staff will have access to advice on the boundaries of appropriate behaviour and will be aware of the School Employee Code of Conduct, which includes contact between staff and pupils outside the work context. Concerns regarding low-level concerns will be included in our Code of Conduct from 1 September 2024 in line with KCSiE Part Four Section two. Staff can access a copy of this through the FAB Learning Staff Hub.
- Newly appointed staff and volunteers will be informed of our arrangements for safer working practices by an induction with a trained DSL (Chloe Argent-Duncan or Claire Bishop) before beginning working and contact with pupils.
- In the event of any complaint or allegation against a member of staff (or the Designated Safeguarding Lead) if the Director is not present, will be notified immediately. If it relates to a Director, the LADO will be informed without delay. We will respond to all allegations robustly and appropriately in collaboration with the Local Authority Designated Officer (LADO), LADO Allegation Officers and HR Business Partner or HR Service.
- Advice and support will be made available by the Safeguarding Children in Education Officer (SCiEO), LADO and NCC HR/ Academy's own HR Service where appropriate to the leadership team.
- All new employees will be appropriately inducted to their role and a link to the [Induction Checklist for Safer Recruitment](#) can be accessed from HR's guidance section of the School Portal.

Links to other Local Authority policies

This policy, together with the following, should be read alongside and in conjunction with other policies and statutory guidance regarding the safety and welfare of children. These together will make up the suite of policies we have in place to safeguard and promote the welfare of children

- Admission Policy
- Anti-Bullying Policy
- Attendance Policy
- Behaviour Policy
- Complaints Policy
- Data Protection
- Drugs Policy
- E-Safety Policy
- Equality and Diversity Policy
- Fire Safety Policy
- First-Aid Policy
- GDPR Policy
- Grievance Policy
- H&S Policy
- Information, Advice and Guidance Policy
- Lone-Working Policy
- Medicines and First Aid Policy
- Modern Slavery Policy
- Off-Site Educational Visits Policy



FAB Learning

Forming a new beginning through bespoke interventions.

- Prevent Policy
- Quality Assurance Policy
- Recruitment Policy
- Remote Teaching and Learning Policy
- Risk Assessment Policy
- RSHE Policy
- Safeguarding Policy
- SEND Policy
- Social Media Policy
- Staff Code of Conduct
- Staff CPD and Performance Management Policy
- Student Abscond Policy
- Supervision of Learners Policy
- Transportation Policy
- Use of Force Policy
- Whistle Blowing Policy.
- Guidance for NSPCC helpline and usage (KCSiE 2024 paragraph 47 and 74; when to call the police guidance from the NSPCC)
- New - NSPCC advice to protecting children with SEN and deaf/disabled children and young people links and help line (KCSiE 24 paragraph 204).
- NCC & NSCP Neglect Toolkit (available from the NSCP website).

Arrangements for responding to any disclosures or incidents involving sexual violence and child sexual harassment here are outlined in the FAB Learning Safeguarding Policy.

Nottinghamshire safeguarding Children Partnership Policy, Procedures and Practice Guidance link: <https://www.nottinghamshire.gov.uk/nscp/policy-procedures-and-guidance>

Roles and Responsibilities

All staff and volunteers

Safeguarding and promoting the welfare of children is everyone's responsibility. Everyone who comes into contact with children and their families have a role to play in safeguarding children. Our staff will always consider what is in the best interests of children.

All staff have received appropriate safeguarding training to enable them to identify concerns early and provide help to children to prevent concerns from escalating. We recognise early help is the best way to support children and by providing support as soon as a problem emerges at any point in a child's life.

We may decide that the children do not require referral to statutory services but may benefit from early help.

Early Help: is support for children of all ages that improves a family's resilience and outcomes or reduces the chance of a problem getting worse. We recognise providing early help is more effective in promoting the welfare of children than reacting later.

FAB Learning

Forming a new beginning through bespoke interventions.

All school and college staff should be particularly alert to the potential need for early help for a child who:

- is disabled or has certain health conditions and has specific additional needs.
- has special educational needs (whether or not they have a statutory Education, Health and Care Plan).
- has a mental health need.
- is a young carer.
- is showing signs of being drawn in to anti-social or criminal behaviour, including gang involvement and association with organised crime groups or county lines.
- is frequently missing/goes missing from education, home, or care,
- has experienced multiple suspensions, is at risk of being permanently excluded from schools, colleges and in Alternative Provision or a Pupil Referral Unit.
- is at risk of modern slavery, trafficking, sexual and/or criminal exploitation.
- is at risk of being radicalised or exploited.
- has a parent or carer in custody or is affected by parental offending.
- is in a family circumstance presenting challenges for the child, such as drug and alcohol misuse, adult mental health issues and domestic abuse.
- is misusing alcohol and other drugs themselves.
- is at risk of so-called 'honour'-based abuse such as Female Genital Mutilation or Forced Marriage.
- is a privately fostered child.

(Working Together to Safeguard Children 2023 and KCSiE paragraph 497)

All our staff are aware of the early help process and understand their role in this. This includes being able to identify emerging problems to recognise children who may benefit from early help. Staff know in the first instance to discuss their concerns with the Designated Safeguarding Lead and understand they may be required to support other agencies and professionals in assessments for early help.

Safeguarding Training

All our staff are aware of systems and resources available within FAB Learning Interventions and these are explained to them as part of staff induction, which include our child protection policy; the employee code of conduct and the role of the Designated Safeguarding Lead and Keeping Children Safe in Education 2024.

We have an induction checklist when staff start employment or volunteering opportunities to ensure they receive the information and training required to support them and keep our children safe. All our staff receive safeguarding and child protection training which is updated every three years. In addition, to this training all staff members receive child protection and safeguarding updates when required, but at least annually. Chloe Argent-Duncan provides



FAB Learning

Forming a new beginning through bespoke interventions.

safeguarding training to all staff and monitors their online safeguarding training. Staff are kept up-to-date with national changes and safeguarding guidance by email and staff meetings each term.

The SDSL provides safeguarding training annually and during termly staff meetings. Staff are kept informed of recent national safeguarding advice and developments by email, sent through the SDSL, and access mandatory safeguarding training through Educare.

All our staff are aware of the process for making referrals to children's social care and understand the role they may have in these assessments and working in partnership with safeguarding agencies.

All our staff know what to do if a child is raising concerns or makes a disclosure of abuse and/or neglect.

Staff will maintain a level of confidentiality whilst consulting with the Designated Safeguarding Lead and children's social care. Our staff will never promise a child that they will not tell anyone about a disclosure or allegation, recognising this may not be in the best interest of the child.

Staff responsibilities

All staff have a key role to play in identifying concerns, recognising children's vulnerability to harm and risk of abuse and provide support and early help for children.

To achieve this, they will:

- Establish and maintain an environment where children feel secure, are encouraged to talk and are listened to.
- Ensure children know that there are adults in the school who they can approach if they are worried or have concerns.
- Plan opportunities within the curriculum for children to develop the skills they need to assess and manage risk appropriately and keep themselves safe.
- Lead and ensure robust arrangements and procedures are in place to effectively manage and regularly monitor the online safety arrangements and ensure appropriate filtering and monitoring on school devices and school networks.
- Attend training to be aware of and alert to the signs of abuse.
- Maintain an attitude of "it could happen here" with regards to safeguarding.
- Record their concerns if they are worried that a child is being abused and report these to the DSL, as soon as practical that day. If the DSL is not contactable immediately a Deputy DSL should be informed.
- Be prepared to refer directly to social care, and the police if appropriate, if there is a risk of significant harm and the DSL or their Deputy is not available.
- Follow the allegations procedures if the disclosure is an allegation against a member of staff.
- Support pupils in line with their child protection plan, child in need plan, LAC Care Plan.
- Treat information with confidentiality but never promising to "keep a secret."



FAB Learning

Forming a new beginning through bespoke interventions.

- Notify the DSL or their Deputy of any child on a child protection plan or child in need plan who has unexplained absence.
- Be prepared to identify and support children who may benefit from early help, support, and interventions.
- Ensure they know who the DSL and Deputy DSLs are and know how to contact them.
- Have an awareness of the Child Protection Policy, the Behaviour Policy, the Staff Behaviour Policy (or Code of Conduct), procedures relating to the safeguarding

Senior Leadership/Management Team responsibilities:

- Contribute to inter-agency working in line with HM Working Together to Safeguard Children 2023 (updated February 2024) guidance.
- Provide a coordinated offer of early help when additional needs of children are identified.
- Ensure all staff, supply staff and volunteers are alert to the definitions of abuse and indicators, and through access to regular training opportunities and updates.
- Working with Children's Social Care, support their assessment and planning processes including the attendance at conference and core group meetings and providing reports as required.
- Provide support and advice on all matters pertaining to safeguarding and child protection to all staff regardless of their position within the school.
- Treat any information shared by staff or pupils with respect and follow agreed policies and procedures.
- Ensure that allegations or concerns against staff including low-level concerns are dealt with in accordance with guidance from Department for Education (DfE KCSiE 2024 Part Four 'Allegations made against/Concerns raised in relation teachers including supply teachers, other staff, volunteers, and contractors in Sections One and Two.

Teachers (including NQTs) and Headteachers – Professional Duty

The Teachers Standards 2012 (updated 13 December 2021) remind us that teachers, newly qualified teachers and headteachers should safeguard children and maintain public trust in the teaching profession as part of our professional duties.

Designated Safeguarding Lead

We have a Senior Designated Safeguarding Lead Chloe Argent-Duncan who takes lead responsibility for safeguarding children and child protection who has received appropriate training and support for this role. The Snr Designated Safeguarding Lead is a senior member of the school leadership team, and their responsibilities are explicit in their job description.

We also have a Deputy Safeguarding Lead, who will provide cover for the Senior Designated Safeguarding Lead when they are not available. Our Deputy Safeguarding Lead has received the same training as our Senior Designated Safeguarding Lead. They will provide additional support to ensure the responsibilities for child protection and safeguarding children are fully embedded within the school ethos and that specific duties are discharged. They will assist the Senior Designated Safeguarding Lead in managing referrals, attending child protection



FAB Learning

Forming a new beginning through bespoke interventions.

conferences, reviews, core group meetings and other meetings of a safeguarding and protection nature to support the child/children.

We acknowledge the need for effective and appropriate communication between all members of staff in relation to safeguarding pupils. Our Designated Safeguarding Lead will ensure there is a structured procedure within the school, which will be followed by all the members of the school community in cases of suspected abuse.

The Senior Designated Safeguarding Lead is expected to:

Manage Referrals

- Refer cases of suspected abuse or allegations to the relevant investigating agencies.
- Support staff who make referrals to children's social care and other referral pathways.
- Refer cases where a person is dismissed or left due to risk/harm to a child and the DBS as required.
- Ensure arrangements are in place year-round for all staff and volunteers to seek advice, support and inform of safeguarding concerns, or incidents and disclosures that inform children are at risk of harm, or abuse, harm or bullying or sexual harm or harassment has occurred.
- Ensure appropriate systems are in place to manage and address online safety, access to mobile phone networks, especially for those children who are potentially at greater risk of harm, abuse, and exploitation and refer concerns where required linked to the PREVENT duty.

Please Note: Should children be subject of safeguarding concerns the Senior DSL remains responsible for oversight of any child on placements or alternative education arrangements. Ofsted will inspect these arrangements as part of 'the child's journey' and form a judgement regarding the safeguards in place.

See KCSiE 2024 Annex C for clarity on the role and responsibilities of the DSL and team.

Work with others

- Consult with the headteacher/principal (where the Senior Designated Safeguarding Lead role is not conducted by the headteacher) to inform him/her of any issues and ongoing investigations.
- As required, consult with the 'case manager' (as per Part Four of KCSiE 2024) and the LADO where there are child protection concerns/allegations that relate to a member of staff.
- Consult with the case manager and the LADO/LADO Allegation Officer where there are concerns about a staff member.
- Consult with staff on matters of safety and safeguarding and deciding when to make a referral by consulting with other agencies and acts as a source of support, advice, and expertise for other staff.
- Take part in strategy discussions or attend inter-agency meetings and/or support other staff to do so and to contribute to the assessment of children including providing and writing reports for conferences and reviews.



FAB Learning

Forming a new beginning through bespoke interventions.

- Consult with the local authority and other agencies in line with HM Working Together to Safeguard Children 2023 (Updated February 2024) and the local Nottinghamshire Safeguarding Children Partnership procedures and practice guidance.
- The designated safeguarding leads and Directors are aware of the local arrangements put in place by Nottinghamshire Safeguarding Children Partnership (NSCP) and know how to access the NSCP website and training.

Undertake training.

- Formal Designated Safeguarding Lead training will be undertaken every two years. Informal training and updating of knowledge and skills will be at regular intervals, undertaken at least annually.
- The Senior Designated Safeguarding Lead is responsible for their own training and should obtain access to resources or any relevant refresher training.
- The Senior Designated Safeguarding Lead is also responsible for ensuring all other staff with designated safeguarding responsibilities access up to date and timely safeguarding training and maintains a register or data base to evidence the training.

The training undertaken should enable the Designated Safeguarding Lead to:

- Understand the assessment process for providing early help and intervention through the NCC & NSCP's Pathway to Provision, the Early Help Service, and Family Hubs.
- Have a working knowledge of how the Nottinghamshire Safeguarding Children Partnership operates, the conduct of a child protection conference, and be able to attend and contribute to these effectively when required to do so.
- Ensure that each member of staff has access to the child protection policy and procedures and any revisions/updates.
- Be alert to the specific needs of children in need, including those with special educational needs and or disabilities and young carers.
- Be able to keep detailed, accurate, secure written records of concerns and referrals.
- Understand the Prevent Duty and provide advice and support to staff on protecting and preventing children from the risk of radicalisation and being grooming into extremist behaviours and attitudes (KCSiE 2024 Annex A and B).
- Understand the reporting requirements for FGM and PREVENT.
- Encourage a culture of protecting children, listening to children and their wishes and feelings.

Raise awareness.

- Ensure that the child protection policies are known, understood, and used appropriately.
- Ensure that the child protection policy is reviewed annually in consultation with staff members, and procedures are updated and reviewed regularly and implemented, and that the governing body is kept up to date and actively involved.
- Work strategically to ensure policies and procedures are up to date and drive and support development work within the school.
- Ensure that the child protection policy is available to parents and carers and uploaded to the school website and make parents/carers aware that referrals may be made about suspected abuse or neglect.



FAB Learning

Forming a new beginning through bespoke interventions.

- Ensure all staff receive induction training covering child protection before working with children and can recognise and report any concerns immediately as they arise.

Child Protection file

- The Senior Designated Safeguarding Lead is responsible for ensuring that when a child leaves the school or college their 'child protection,' 'child in need' file or 'confidential' file is transferred to the new school or college at the same time the child goes on roll of its new school or education provision.
- A record of the number of children open and subject to CP, CiN and LAC concerns is maintained and shared with the governing body annually.
- A record or data on the cohort of children having or have had a social worker and social care involvement will be maintained.
- We will ensure our management arrangements for maintaining, keeping, and storing information and records for children where a safeguarding or child protection concern has been identified for a child is managed in accordance with statutory guidance in KCSiE 2024.

Chloe Argent-Duncan maintains management oversight of safeguarding and child protection files. Staff are trained to inform the DSL by phone call when they first raise concerns, followed by completing a Safeguarding Concern Form on the same working day. The DSL is responsible for discussing safeguarding matters with commissioners and appropriate agencies, as well as involving families in decision making processes.

FAB Learning uses electronic management systems for learner safeguarding files. Should a learner leave provision, their safeguarding file/case files kept by FAB Learning is transferred securely (password protected) to the confirmed provider in-line with KCSiE 2024.

Availability

- During term time the Senior Designated Safeguarding Lead or a Deputy will always be available (during school or college hours) for staff in the school or college to discuss any safeguarding concerns. In the absence of the Designated Safeguarding Leads a member of the senior leadership team will be nominated to provide cover. Appropriate arrangements will also need to be in place all year round for any out of school hours' activities in line with the guidance contained in DfE KCSiE 2024 Part Two and Annex C.

Headteacher

The Headteacher of the school will ensure that:

- The policies and procedures adopted by the company, (particularly those concerning referrals of cases of suspected abuse and neglect), are understood, and followed by **all** staff.
- Our Senior Leaders have oversight of our Single Central Record (SCR) which is reviewed regularly and is compliant with statutory guidance.

FAB Learning

Forming a new beginning through bespoke interventions.

- Sufficient resources and time are allocated to enable the Designated Safeguarding Lead and other staff to discharge their responsibilities, including taking part in strategy discussions and inter-agency meetings, and contributing to the assessment of children.
- All staff and volunteers feel able to raise concerns about poor or unsafe practice regarding children, and such concerns are addressed sensitively and effectively in a timely manner in accordance with agreed whistle-blowing policies.
- The SDSL/Directors will ensure all staff including supply teachers and volunteers have access to and read and understand the requirements placed on them through: - our Child Protection Policy; the Staff Behaviour Policy/Code of Conduct Policy.
- The SDSL will ensure there are mechanisms in place to assist staff to fully understand and discharge their role and responsibilities as set out in KCSiE 2024.
- Where there is an allegation made against a member of staff (either paid or unpaid) that meets the criteria for a referral to the LADO, then the Director/SDSL will discuss the allegation immediately with the LADO (within 24 hours) and ensure that cases are managed as per Part Four: Allegations made against/Concerns raised in relation to teachers, including supply teachers, other staff, volunteers, and contractors.

Children with Special Educational Needs

We recognise that children with special educational needs (SEN) and or disabilities can face additional safeguarding challenges on and offline, and many of these learners access our provision. Children with SEN and or disabilities are especially vulnerable when identifying concerns due to their impaired capacity to resist or avoid abuse. They may have speech, language and communication needs which may make it difficult to tell others what is happening.

All staff are aware that additional barriers can exist when recognising abuse and neglect for children with SEND and be more prone to peer group isolation or bullying (including prejudice-based bullying) than other children. They may not always show outward signs and may have communications barriers and difficulties in reporting challenges, especially involving exploitation or incidents involving child- on -child harm, abuse, or harassment and particularly where that harassment or harm is of a sexual nature. Our staff's vigilance will be a supporting factor to keeping all children safe.

Our policy reflects the fact that additional barriers can exist when recognising abuse and neglect in this group of children which include:

- assumptions that indicators of possible abuse such as behaviour, mood and injury relate to the child's disability without further exploration.
- children with SEN and disabilities can be disproportionately impacted by things like bullying, without outwardly showing any signs; and communication barriers and difficulties in overcoming their ability to disclose incidents or the risk of harm they feel subject to,
- addressing individual behaviour concerns and incidents considering the child's SEN and disabilities.
- recognising and having in place additional support for example to teach, advise, mentor and support children with SEND from online harms, hoaxes, bullying, grooming and radicalisation and enable them to have confidence and the ability to stay safe online, either in schools or outside the school environment.



FAB Learning

Forming a new beginning through bespoke interventions.

Staff at FAB Learning are also required to read the SEND Policy, Lone-Working and Use of Force Policy provided at induction and forward all questions to the DSL/Directors at FAB.

Taking action where concerns are identified.

Our staff recognise the difference between concerns about a child and a child in immediate danger.

If staff have concerns about a child, they will need to decide what action to take. A discussion should take place with the Senior Designated Safeguarding Lead, to agree a course of action.

If a child is in immediate danger or risk of harm a referral will be made immediately to the Multi-Agency Safeguarding Hub and/or immediately to the police if at imminent risk of harm by the member of staff if required, with the Designated Safeguarding Lead being informed of the referral.

If a child chooses to tell a member of staff about alleged abuse, there are a number of actions that staff will need to take to support the child:

- The key facts will be established in language that the child understands, and the child's words will be used in clarifying/expanding what has been said.
- No promises will be made to the child, e.g., to keep secrets.
- Staff will stay calm and be available to listen.
- Staff will actively listen with the utmost care to what the child is saying.
- Where questions are asked, this should be done without pressurising, and only using open questions.
- Leading questions should be avoided as much as possible.
- Questioning should not be extensive or repetitive.
- Staff will not/ should not put words in the child's mouth but will subsequently note the main points carefully.
- The staff will keep a full written record duly signed and dated, including the time the conversation with the child took place, outline what was said, comment on the child's body language etc.
- It is not appropriate for staff to make children write statements about abuse that may have happened to them or get them to sign the staff record.
- Staff will reassure the child and let them know that they were right to inform them and inform the child that this information will now have to be passed on.
- The Designated Safeguarding Lead will be immediately informed unless the disclosure has been made to them.
- Information should be shared with children's social care without delay, either to the child's own social worker or to the MASH. Children's Social Care will liaise with the police where required, which will ensure an appropriate police officer response rather than a uniformed response.
- The Police would only therefore be contacted directly in an emergency or if a child is in immediate risk of harm, abuse, or danger.
- If unsure, the MASH has available a Consultation Phone Line during office hours where a conversation (without naming children) can be used to speak with a qualified social worker. No record of the conversation will be made it is purely an advice line.

Staff should never attempt to conduct an investigation of suspected child abuse by interviewing the child or any others involved especially if a criminal act is thought to have occurred. The only people who should investigate child abuse and harm are Social Care, Police, or the NSPCC.

Confidentiality

We recognise that all matters relating to child protection are confidential; however, a member of staff must never guarantee confidentiality to children; children will not be given promises that any information about an allegation will not be shared.

Where there is a child protection concern it will be passed immediately to the Designated Safeguarding Lead and/or to children's social care. When a child is in immediate danger children's social care/the police will be contacted.

The Headteacher or Senior Designated Safeguarding Lead will disclose personal information about a pupil to other members of staff, including the level of involvement of other agencies, only on a 'need to know' basis.

All staff are aware that they have a professional responsibility to share information with other agencies to safeguard children. They are aware that the Data Protection Act 1998 (DPA) and UK General Data Protection Regulation (UK GDPR) should not be a barrier to sharing of information where failure to do so would result in a child being placed at risk of harm (KCSiE 24 paragraph 55).

Further guidance can be found by visiting Nottinghamshire Safeguarding Children Partnership website: <https://www.nottinghamshire.gov.uk/nscp>

Information Sharing

Effective sharing of information between practitioners and local organisations and agencies is essential for early identification of need, assessment, and service provision to keep children safe. Rapid Reviews (RRs) have highlighted that missed opportunities to record and thereby understand the significance of sharing information in a timely manner can have severe consequences for the safety and welfare and well-being of children (Working Together to Safeguard Children 2023, updated February 2024).

We will adopt the information sharing principles detailed in statutory safeguarding guidance contained within:

- *DfE KCSiE 2024 paragraphs 114 to 122 and Annex C.*
- *HM Working Together to Safeguard Children 2023 Paragraphs 28 to 34 and on pages 18 to 22.*
- *HM Information Sharing: Advice for practitioners providing safeguarding services to children, young people, parents, and carers (Data Protection Act 1998 (DPA) and UK General Data Protection Regulation (UK GDPR)).*

Records and Monitoring (KCSiE 2024 paragraphs 66 to 67, Part Four, Part Five, Annex C)

Any concerns about a child will be recorded in writing within 24 hours. All records will provide a factual and evidence-based account and there will be accurate recording of any actions. Records will be signed, dated and, where appropriate, witnessed. Where an opinion or professional judgement is recorded this should be clearly stated as such.

At no time will an individual teacher/member of staff or school be asked to or consider taking photographic evidence of any injuries or marks to a child's person; this type of behaviour could lead to the staff member being taken into managing allegations procedures. The body maps will be used in accordance with recording guidance and to support clarity for example of areas of injury, marks and bruising and or touching.

Any concerns will be reported and recorded without delay to the appropriate safeguarding services e.g., MASH or the child's social worker if already an open case to social care.

A chronology will be kept in the main school file prior to the commencement of a confidential safeguarding file. Staff, particularly pastoral staff, will record any minor concerns on the chronology and will take responsibility for alerting the Designated Safeguarding Lead should the number of concerns rise or, in their professional judgement, become significant. At the point at which a confidential safeguarding/child protection file (see below) is commenced then the chronology will be transferred to the confidential safeguarding/child protection file.

Safeguarding, child protection and welfare concerns will be recorded and kept in a separate secure file known as a 'confidential safeguarding or child protection' file, which will be securely stored and away from the main pupil file. The main pupil file should have a **red C** in the top right-hand corner to denote a separate file exists

We will ensure all our files will be available for external scrutiny for example by a regulatory agency or because of a serious case review or audit as required by statutory guidance.

Why recording is important.

Our staff will be encouraged to understand why it is important that recording is comprehensive and accurate and what the messages from serious case reviews are in terms of recording and sharing information. It is often when a chronology of information is pieced together that the level of concern escalates or the whole or wider picture becomes known.

FAB Learning maintains electronic 'confidential safeguarding files or 'child protection' file using Google Forms.

We acknowledge without information being recorded it can be lost, miss informed, open to interpretation or change. This could be crucial information, the importance of which is not always necessarily apparent at the time. We will ensure all our recording is made in timely manner and is kept safe and signed off by one of our DSLs to evidence the reporting and



FAB Learning

Forming a new beginning through bespoke interventions.

information being used to safeguard the child and detail the 'child's journey through the safeguarding system.'

We acknowledge, on occasion this information could be crucial evidence to safeguard a child or be evidence in future criminal prosecutions.

Recording Practice and Procedures

Timely and accurate recording will take place when there are any issues regarding a child. A recording of every incident or concern for the child will be made, including any telephone calls to other professionals. These will also be recorded on the chronology and kept within the child protection file for that child, as over time they are likely to help identify any patterns or emerging risks and needs. This will include any contact from other agencies who may wish to discuss concerns relating to a child. Actions will be agreed, and roles and responsibility of each agency will be clarified, and outcomes recorded.

The chronology will be brief and log activity; the full recording will be on the record of concern.

Further detailed recording will be added to the record of concern and will be signed and dated. Records will include an analysis of the event or concerns and will take account of the holistic needs of the child, and any historical information held on the child's file.

Support and advice will be sought from social care, or the early help service whenever needed. In this way a picture can emerge, and this will assist in promoting an evidence-based assessment and determining any action(s) that needs to be taken.

This may include no further action, whether an EHAF should be undertaken, or whether a referral should be made to MASH/Children's Social Care in-line with the NCC Pathway to Provision, made available by Nottinghamshire Safeguarding Children Partnership.

Such robust practice across child protection and in safeguarding and promoting the welfare of children will assist the alternative provision and DSL team in the early identification of any concerns which may require addressing further and the prevention of future harm, risk, or abuse.

The Child Protection (CP), Child in Need (CiN) or Confidential file

(KCSiE 2024 Annex C pages 171 to 172 and paragraphs 101,121 to 122, 547 and 550).

The establishment of a Child Protection, CiN or Confidential Safeguarding file, which is separate from the child's main school file, is an important principle in terms of storing and collating information about children which relates to either a child protection or safeguarding concern or an accumulation of concerns about a child's welfare which are outside of the usual range of concerns which relate to ordinary life events. It should be borne in mind that what constitutes a 'concern' for one child may not be a 'concern' for another and the child's particular circumstances will need to be considered for example if a child is subject to a child protection plan, CiN plan or has looked after status (LAC). Professional judgement will therefore be a key factor when making this decision and will need clear links between pastoral staff and those with Designated Safeguarding Lead responsibilities in school.



FAB Learning

Forming a new beginning through bespoke interventions.

A 'child protection' or 'confidential safeguarding' file should be commenced in the event of:

- A referral to MASH/Children's Social Care.
- A number of minor concerns on the child's main school file.
- Any child is open to social care or Early Help Service.
- Involved with statutory safeguarding agency.

All 'child protection' or 'confidential' files should contain the following:

- A front sheet.
- A chronology.
- A record of concern in more detail and body map, where appropriate.
- A record of concerns and issues shared by others.

Our alternative education provider will keep electronic records of concerns about children even where there is no need to refer the matter to MASH/Children's Social Care (or similar) immediately, but these records will be kept within the separate concerns file.

Records will be kept up to date and reviewed regularly by the Snr Designated Safeguarding Lead, to evidence and support actions taken by staff in discharging their safeguarding arrangements. Original notes will be retained (but clearly identified as such) as this is a contemporaneous account; they may be important in any criminal proceedings arising from current or historical allegations of abuse or neglect.

The SDSL is responsible for file maintenance, and keeps a secure safeguarding file for each learner that includes staff concern forms, as well as details of actions taken and referrals made. A 'Safeguarding Log' is kept to summarise dated safeguarding concerns, and actions taken for all learners accessing the provision, to give an overview of learners requiring support and relevant timelies. This document also allows the SDSL to plan training for specific safeguarding concerns. The SDSL is required to keep this information on a Google Drive, requiring two-factor authentication to access.

The 'confidential safeguarding or child protection' file can be active or non-active in terms of monitoring i.e., a child is no longer LAC, subject to a child protection plan or EHAF and this level of activity can be recorded on the front sheet as a start and end date. If future concerns arise, they can be re-activated and indicated as such on the front sheet and on the chronology as new information arises.

Transfer of child's child protection file, child in need, LAC, or confidential file (statutory requirement):

We will adopt the file transfer guidance and arrangements contained in KCSiE 2024 and ensure when a child moves school/education provision their child protection/confidential safeguarding file is sent securely to their new educational setting when the child starts/ leaves the school/academy.

For those children subject of social care and safeguarding agency involvement will ensure the file is able to evidence the child's journey and include key information as described in KCSiE



FAB Learning

Forming a new beginning through bespoke interventions.

2024. Should a child subject to social care involvement transfer schools, college, or education provider we will ensure the child's child protection or confidential file move is transferred within 5 days as required by KCSIE.

Our Senior DSLs will liaise directly with the receiving school, college or alternative placement and hold a discussion to share important information to support the child's transfer to ensure the child remains safeguarded, has any 'reasonable adjustments' agreed, and put in place and to ensure the changes experienced by the child are as smooth as possible to enable a positive integration experience and engagement with new staff and learning.

In accordance with KCSiE 2024 we will maintain information on cohorts of children who have been open to social care, have had a social worker or who are closed to social care and may have returned to the family home. This information will only be considered for sharing 'if appropriate' with the new provider/school in advance of the child leaving to allow for the new provider/school to continue supporting the children who have had a social worker or been victims of abuse, including those who are currently receiving support through the 'Channel' programme.

(KCSiE 2024 paragraph 121 to 122 and Annex C).

Educating Young People – Opportunities to teach safeguarding

(KCSiE 2024 paragraphs 128 to 136, Annex A & Annex C Online Safety).

We will teach children in an age-appropriate way about youth produced imagery, on-line risks associated with social networking to prevent harm by providing them with the skills, attributes, and knowledge to help them navigate risks, including covering online safety, remote learning, filters and monitoring, information security, cyber-crime, reviewing online safety platforms and use of mobile technology. We will ensure appropriate filters and monitoring systems are in place and regularly review their effectiveness.

The education we provide for online safety will consider the need for children to learn using online technologies in a safe environment whether that be, in the home or in a community environment while attending FAB Learning. This will also be taught as part of a wider RSHE programme, as well as through other subject areas and ICT.

We will ensure a whole school approach is in place to promote giving children the space to explore key issues in a sensitive way and the confidence to seek the support of adults should they encounter problems or online harms, hoaxes or harassment including involving incidents of sexual violence, sexual harassment between children and other forms of exploitation.

We will carefully consider mobile phone use and how this is managed to ensure it is reflected in our mobile and smart technology policy. This will include where children have unlimited and unrestricted access to the internet via mobile phone networks (i.e., 3G, 4G and 5G). We are aware many children have independent and unsupervised access to smart technology and could mean some children, could be vulnerable to, sexual harassment, bullying, and exploitation via their mobile and smart technology. We will use opportunities to raise awareness of risks and share this with parents and carers where able.

FAB Learning

Forming a new beginning through bespoke interventions.

For information on learner use of mobile phones and social media technologies please refer to the FAB Learning E-Safety Policy.

All tutors are required to integrate PSHE into each session, with focus on e-safety and appropriate online use. Tutors are also required to complete targeted training on e-safety, and are signposted to resources to complete with learners during session times.

During the learner induction process and initial home visit carried out by Learning Managers, parents are informed of resources available to learn about online safety risks and technology. All concerns related to learner online safety are discussed between the parent and DSL, and more targeted resources are signposted.

For learners accessing education in the home, staff are required to adhere to the FAB Learning e-safety policy. Sessions are carried out with a supervising parent present, to ensure the safety of learners and staff taking part in sessions, as well as ensure the appropriateness of material that learners are able to access during their session times.

Helplines and reporting

- Children can talk to a Child Line counsellor 24 hours a day about anything that is worrying them by ringing 0800 11 11 or in an online chat at <https://www.childline.org.uk/get-support/1-2-1-counsellor-chat/>
- Where staff members feel unable to raise an issue with their employer, or feel they have a genuine concern that is not being addressed we acknowledge they may wish to consider whistleblowing channels. Likewise, if parents and carers are concerned about their child, they can contact the NSPCC Helpline by ringing 0800 028 028 0295, or by emailing help@nspcc.org.uk

Advice and Resources for Parents:

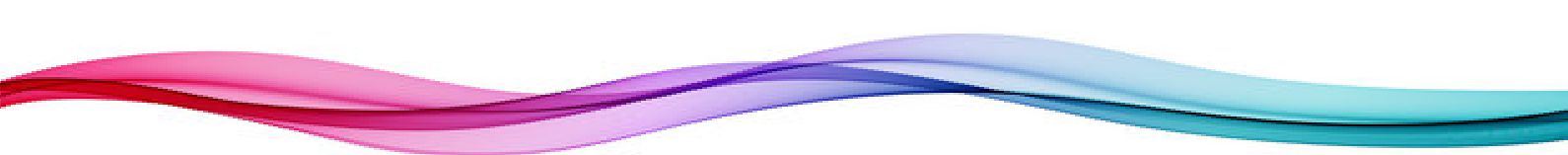
- Police: 101/999
- Derbyshire County Mash: 01629533190
- Derby City Mash: 01332642855
- Childline: 08001111
- Mental Health Crisis: 08081963779
- Young Minds: youngminds.org.uk
- Mind: Mind.org.uk / 03001233393
- Derbyshire Healthcare NHS Foundation Trust: 08000280077
- Nottinghamshire Healthcare NHS Foundation Trust: 08081963779

The following appendices are a part of this policy (delete or amend as appropriate):

<i>Appendix 1 - NCC LA Flow Chart 2024-2025 'What to do if you are worried a child is being abused or at risk of harm, neglect.'</i>
--

<i>Appendix 2 -Template: Body Maps Guidance</i>

<i>Place to add any school, academy, college or AP additional guidance, policies, or documents e.g., Child-on-Child Abuse Policy.</i>



FAB Learning

Forming a new beginning through bespoke interventions.